

Workers' Compensation Claims by Industry Sector and Causation — Ohio, 2001–2010

Alysha R. Meyers, PhD, CPE

CSTE 2015

June 14, 2015

"The findings and conclusions in this report/ presentation have not been formally disseminated by the National Institute for Occupational Safety and Health and should not be construed to represent any agency determination or policy."



Study Team

Ohio Bureau of Workers' Compensation

- Michael Lampl
- Abe Al-Tarawneh
- David Robins

National Institute for Occupational Safety and Health — Center for Workers' Compensation Studies

- Alysha Meyers
- Tim Bushnell
- Steve Wurzelbacher
- Steve Bertke
- Chia Wei



Presentation Outline

1. Background
2. Methods
3. Surveillance results: Workers' compensation (WC) claims by industry sector
 - Musculoskeletal disorders (ERGO)
 - Slips, trips, and falls (STF)
 - Other causes
4. Discussion



Ohio Bureau of Workers' Compensation (OHBWC)

- Exclusive source for WC Insurance in Ohio for small employers
- Employers (private and some public) with > 500 employees can self insure
- 250,000+ WC policy holders
- Insures two-thirds of Ohio workers



OHBWC-NIOSH Collaboration Goals

- Understand industry risk trends
- Tailor safety, health, and disability management services
 - Identify industries and employers in most need of service
 - Evaluate effectiveness of BWC programs and services
 - Focus on what works better



WC Data Uses

- Ohio Employers
 - Benchmark safety and health performance
 - Compare versus industry peers
 - Develop data-driven plans for prevention and care



NIOSH WC Trending Methods

- OHBWC combines WC claims data with state unemployment insurance data by employer:
 - North American Industry Classification System (NAICS) industry code (up to 6 digits)
 - Annual Average number of employees at each employer
 - Part- and full-time employees combined
- OHBWC and NIOSH classify employers as
 - OHBWC-insured (single, multiple location)
 - Self-insured (single, multiple location)



NIOSH WC Trending Methods Cont'd

- NIOSH estimates rates: claims rates per full time equivalent (FTE) for each employer
 - Adjust number of employees using average hours per employee by industry
 - Current Population Survey data at the NIOSH Sector level — 2001–2010
- NIOSH auto-codes causation of claims



Causation Auto Coding Methods

- Liberty Mutual, Purdue University, BLS, NIOSH, and others have been developing automated text mining approaches to code claims
 - 1/16/14 webinar
 - <http://www.youtube.com/watch?v=cJA7T0VLNlg&feature=youtu.be>
 - 4/9/14 webinar
 - <http://www.cdc.gov/niosh/topics/workercomp/cwcs/news.html>



NIOSH Causation Auto Coder

- NIOSH method
 - Based on claim narrative and injury/illness category (ICD diagnoses)
 - The approach is fast, accurate, and reliable
 - Codes claims as three causation types (ergonomic, slip/ trip/ fall, other) but increasing to more types with future versions
 - NIOSH will share free SAS code and built-in word frequencies- request at cwcs@cdc.gov



Mutually Exclusive and Exhaustive Claim Causation Categories

- **Ergonomic (ERGO)**
 - Musculoskeletal disorders caused by one or more ergonomic risk factors: excessive force, awkward postures, repetitive motion, contact stress, vibration
- **Slip/ Trip/ Fall (STF)**
 - Slips or trips without a fall
 - Fall from height or on same level
- **Others (OTH)**
 - Struck by/ against, caught between, motor vehicle, etc.



OHBWC-Insured Private Employers Data Summary 2001—2010

- OHBWC covers approximately 2/3 of all Ohio employees for workers' compensation
- Analyses focus on data from OHBWC-insured employers
- During this period, approximately 80% of private industry claims were from single-location employers
- Results reported in this presentation are for privately owned, single-location (single-establishment) employers only



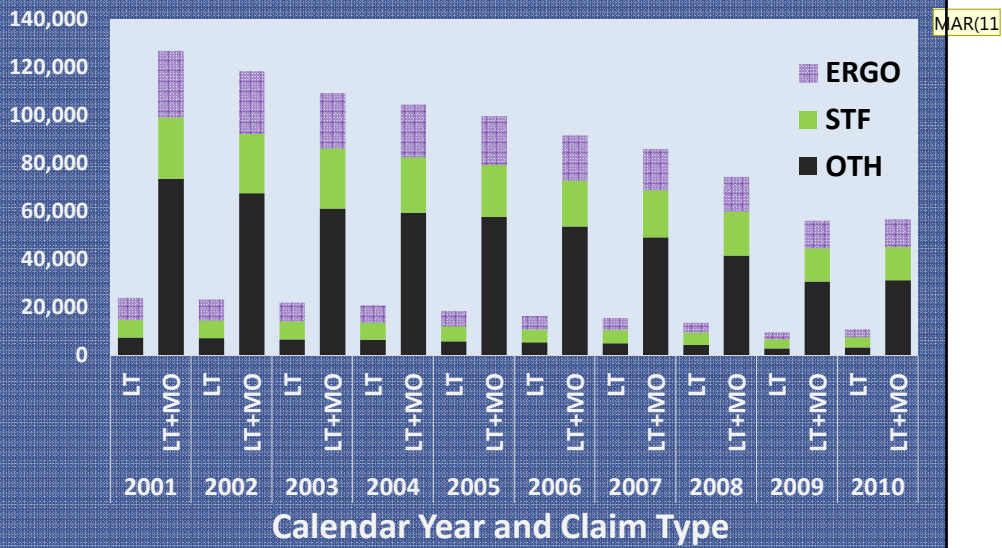
Prevention Index¹ (PI) by Industry

- Claims for 2006–2010 were pooled and ranked by WC claim frequency and WC claim rate
- $Prevention\ Index = \frac{Frequency\ Rank + Rate\ Rank}{2}$

¹Silverstein, B., E. Viikari-Juntura, and J. Kalat. "Use of a Prevention Index to Identify Industries at High Risk for Work-Related Musculoskeletal Disorders of the Neck, Back, and Upper Extremity in Washington State, 1990-1998." *American Journal of Industrial Medicine* 41, no. 3 (2002): 149-69.



OHBWC-insured WC claim frequency by cause, year, and claim type [all claims and lost-time claims only]



Slide 14

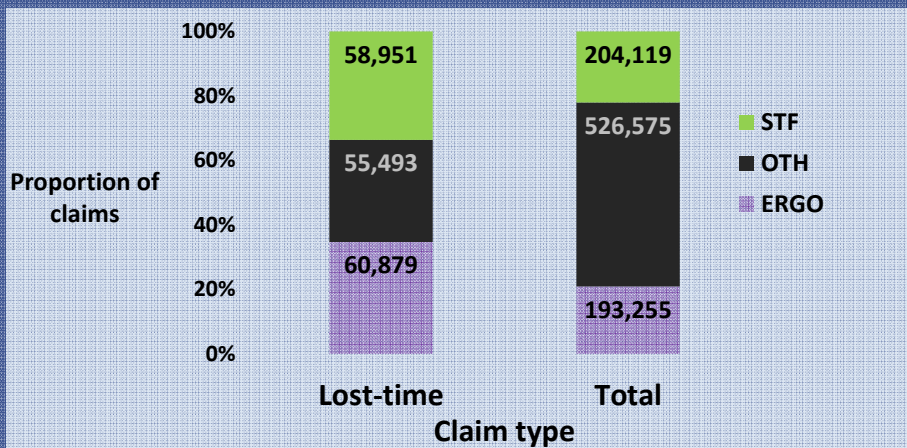
MAR(11 replaced chart 5/22 pasted and embedded table, not sure that was the best idea
Meyers, Alysha R. (CDC/NIOSH/DSHEFS), 5/22/2015

NIOSH National Occupational Research Agenda (NORA) Industry Sectors by NAICS Codes

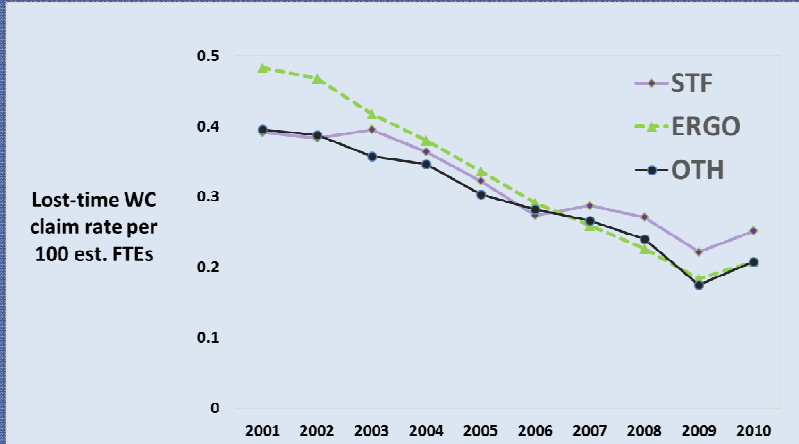
- Agriculture, Forestry, Fishing/ Hunting = 11
- Construction = 23
- Health Care and Social Assistance= 62, 54194 , 81291
- Manufacturing = 31, 32, 33
- Mining = 21
- Oil & Gas = 211, 213111, & 213112
- Public Safety = 92212, 92214, 92216, 62191 (*For private industry, PSA only includes 62191, Ambulance Services*)
- Services (except Public Safety) = 51-56, 61, 71, 72, 81, 92
- Transportation, Warehousing, Utilities = 22, 48, 49
- Wholesale Trade/ Retail Trade =42, 44, 45



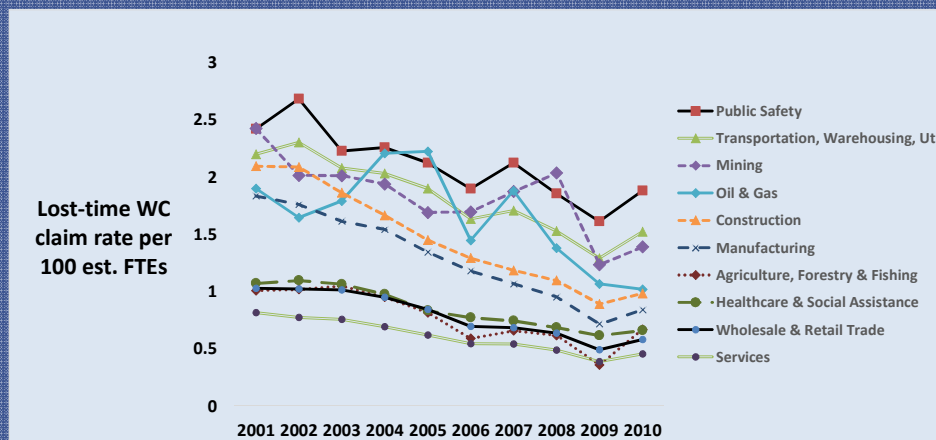
Summary of Proportions of Claims by Causation by Claim Type for OHBWC-Insured Single Location Private Employers, 2001–2010 combined



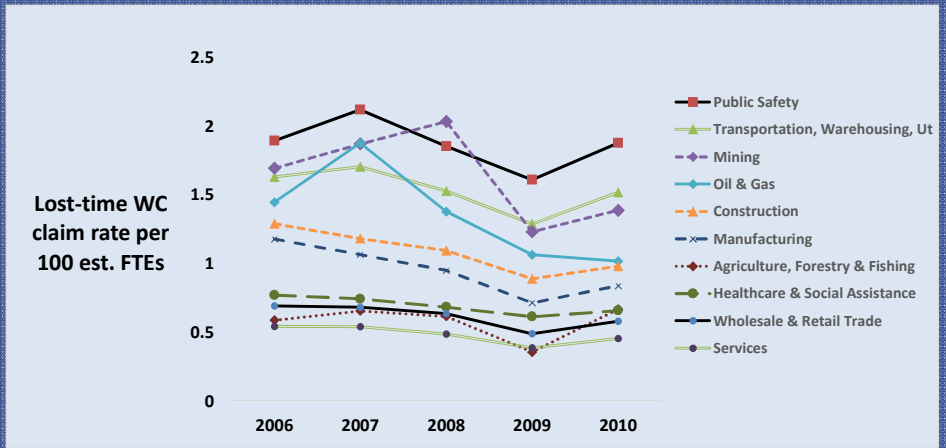
OHBWC Lost-time WC claim rates by causation — 2001–2010



OHBWC WC claim lost-time rates per 100 estimated FTEs by year by NORA sector — 2001–2010



OHBWC WC claim Lost-time rates per 100 estimated FTEs by year by NORA sector — 2006–2010



ERGONOMIC CLAIMS



NIOSH ERGONOMIC Case definition

- Work-related musculoskeletal disorders (ERGO) caused by ergonomic hazards
- In OHBWC-NIOSH WC claims database ERGO claims meet these two criteria:
 1. Assigned one of several specific medical diagnoses (e.g. carpal tunnel syndrome, lumbosacral sprain/strain)
 2. Claim associated with ergonomic hazards at work (e.g. bending, twisting, lifting, reaching, repetitive motion) as stated in claims' narratives

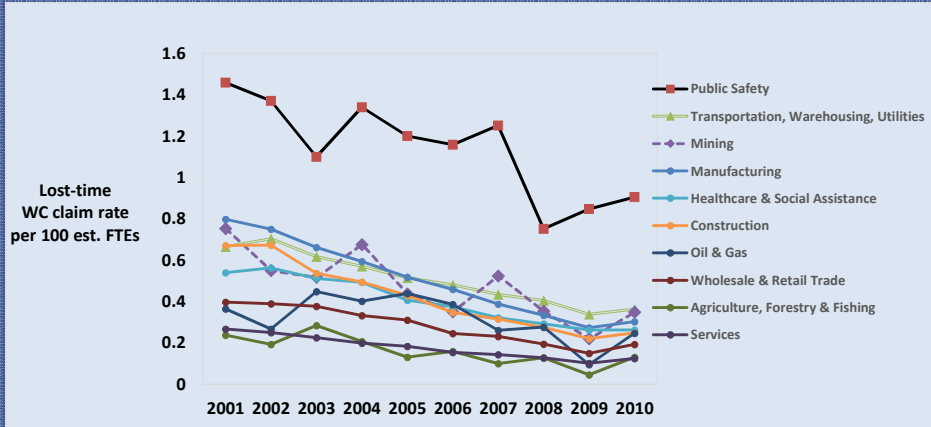


Top 10 Lost-time Injury Categories for ERGOs by cause — 2001–2011

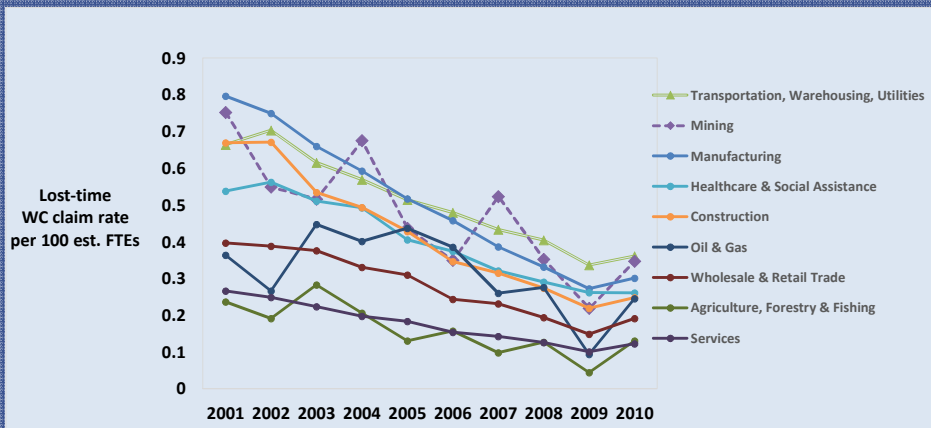
Lost-time Claim Count	% Lost-time Claims	Injury Category	ERGO	OTH	STF
44,713	14.91	Sprains-Back	66%	12%	22%
34,175	11.4	Sprains - upper extremity	58%	16%	26%
23,565	7.86	Disc Disorders	63%	14%	23%
17,443	5.82	Soft tissue/Enthesopathy	66%	14%	20%
7,283	2.43	Hernia of abdominal cavity	96%	1%	3%
5,510	1.84	Carpal Tunnel Syndrome	95%	3%	2%
30,419	10.14	Sprains - lower extremity	14%	8%	79%
13,649	4.55	Dislocation	23%	8%	69%
8,485	2.83	Sprains - Neck	29%	50%	21%
2,208	0.74	Sprains - other	86%	5%	9%



Lost-time ERGO claim rates by NORA sector (2001–2010)



Lost-time ERGO claim rates by NORA sector (2001–2010) – public safety excluded



Lost-time ERGOs by NORA sector — 2006–2010

NORA Sector	Est. FTEs	Claim Count	Claim count rank	Claim rate rank	PI	PI rank
Manufacturing	1,664,241	5,955	1	4	2.5	1
Healthcare & Social Assistance	1,204,710	3,661	3	5	4	3
Public Safety	23,328	229	7	1	4	3
Transportation, Warehousing & Utilities	363,059	1,485	6	2	4	3
Construction	851,100	2,461	5	6	5.5	5.5
Services	3,332,630	4,400	2	9	5.5	5.5
Mining	18,148	65	9	3	6	7.5
Wholesale & Retail Trade	1,417,225	2,916	4	8	6	7.5
Oil & Gas	16,246	41	10	7	8.5	9
Agriculture, Forestry & Fishing	58,761	67	8	10	9	10

Top 10 4-digit NAICS subgroups for Lost Time ERGOs

1. 6231-Nursing Care Facilities
2. 3363-Motor Vehicle Parts Manufacturing
3. 6233-Community Care Facilities for the Elderly
4. 3315-Foundries
5. 6219-Other Ambulatory Health Care Services
6. 4931-Warehousing and Storage
7. 3262-Rubber Product Manufacturing
8. 4248-Beer, Wine, and Distilled Alcoholic Beverage Merchant Wholesalers
9. 4841-General Freight Trucking
10. 4842-Specialized Freight Trucking

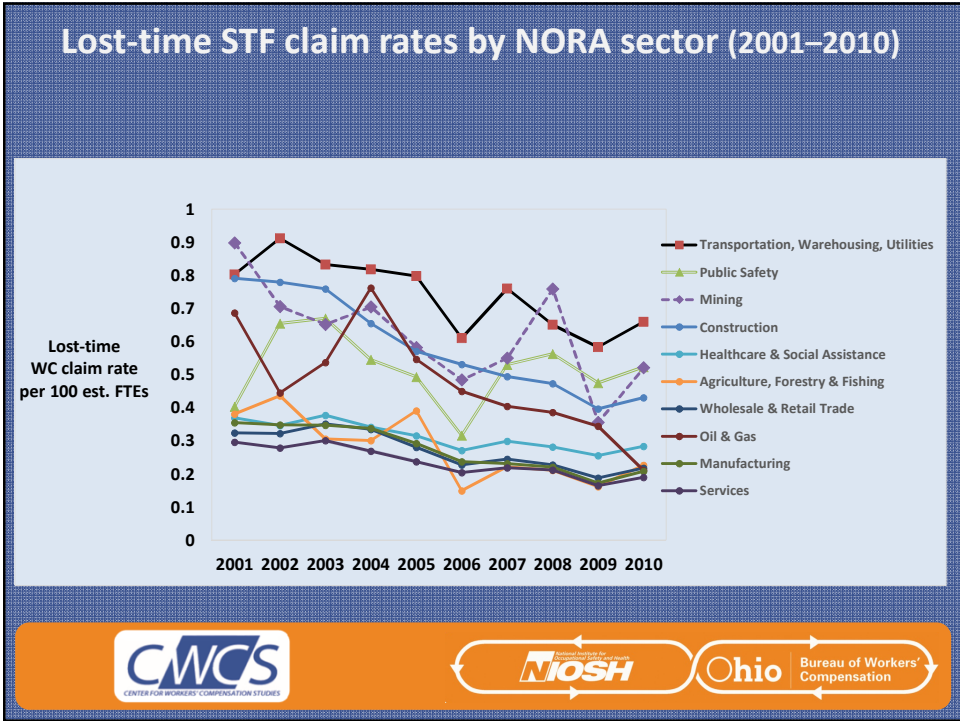
Top 10 4-digit NAICS subgroups for Lost Time ERGOs

1. **6231-Nursing Care Facilities**
2. 3363-Motor Vehicle Parts Manufacturing
3. 6233-Community Care Facilities for the Elderly
4. 3315-Foundries
5. **6219-Other Ambulatory Health Care Services**
6. 4931-Warehousing and Storage
7. 3262-Rubber Product Manufacturing
8. **4248-Beer, Wine, and Distilled Alcoholic Beverage Merchant Wholesalers**
9. 4841-General Freight Trucking
10. 4842-Specialized Freight Trucking



SLIP, TRIP & FALL CLAIMS





Lost-time STFs by NORA sector — 2006–2010

NORA Sector	Est. FTEs	Claim Count	Claim count rank	Claim rate rank	PI	PI rank
Construction	851,100	4,039	2	4	3	1
Transportation, Warehousing & Utilities	363,059	2,394	6	1	3.5	2
Healthcare & Social Assistance	1,204,710	3,371	4	6	5	3.5
Services (excluding Public Safety)	3,332,630	6,727	1	9	5	3.5
Mining	18,148	97	9	2	5.5	6
Manufacturing	1,664,241	3,612	3	8	5.5	6
Public Safety	23,328	112	8	3	5.5	6
Wholesale & Retail Trade	1,417,225	3,162	5	7	6	8
Oil & Gas	16,246	59	10	5	7.5	9
Agriculture, Forestry & Fishing	58,761	115	7	10	8.5	10

Top 10 4-digit NAICS subgroups for Lost Time STFs

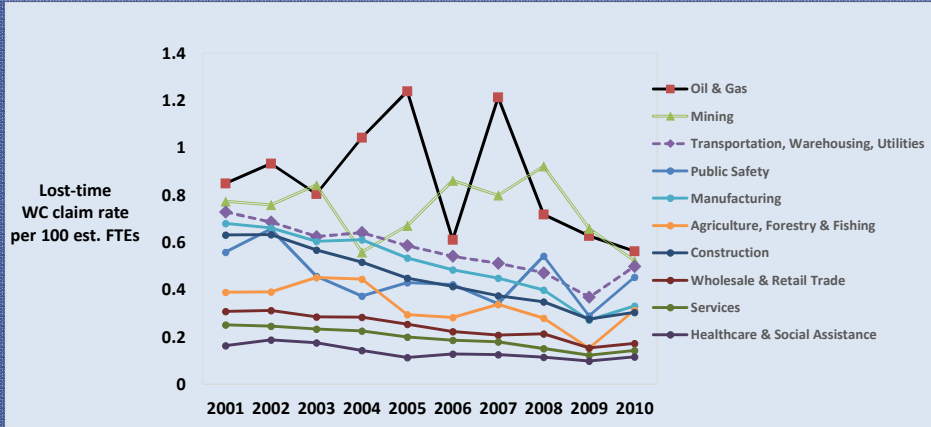
- | | |
|---|---|
| 1. 4841-General Freight Trucking | 7. 4244-Grocery and Related Product Wholesalers |
| 2. 4842-Specialized Freight Trucking | 7. 6243-Vocational Rehabilitation Services |
| 3. 2381-Foundation, Structure, and Building Exterior Contractors | 9. 2383-Building Finishing Contractors |
| 4. 6231-Nursing Care Facilities | 10. 2371-Utility System Construction |
| 5. 4248-Beer, Wine, and Distilled Alcoholic Beverage Merchant Wholesalers | 10. 5617-Services to Buildings and Dwellings |
| 7. 2382-Building Equipment Contractors | |



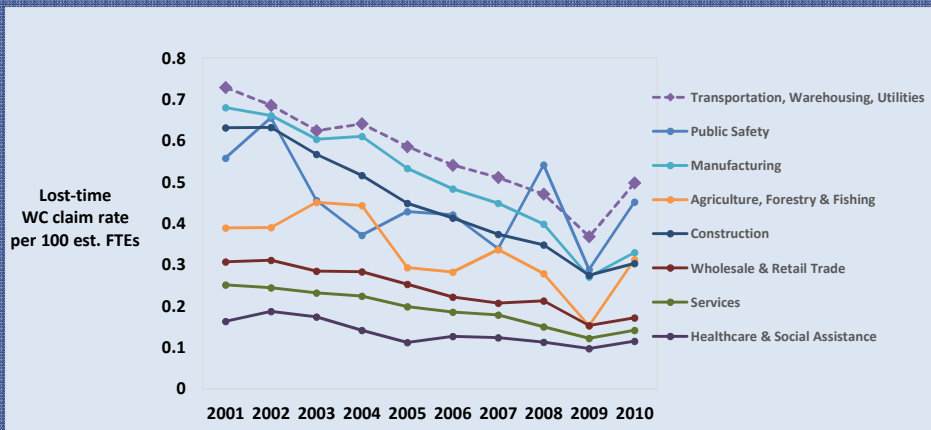
OTHER CAUSATION CLAIMS



Lost-time OTH claim rates by NORA sector (2001–2010)






Lost-time OTH claim rates by NORA sector (2001–2010) excluding Oil/Gas & Mining sectors



Lost-time OTHs by NORA sector — 2006–2010

NORA Sector	Est. FTEs	Claim Count	Claim count rank	Claim rate rank	PI	PI rank
Manufacturing	1,664,241	6,647	1	5	3	1
Transportation, Warehousing, Utilities	363,059	1,755	5	3	4	2
Construction	851,100	3,003	3	6	4.5	3
Mining	18,148	137	8	2	5	4.5
Oil & Gas	16,246	123	9	1	5	4.5
Services	3,332,630	5,289	2	9	5.5	6
Wholesale & Retail Trade	1,417,225	2,796	4	8	6	7
Agriculture, Forestry & Fishing	58,761	162	7	7	7	8.5
Public Safety	23,328	95	10	4	7	8.5
Healthcare & Social Assistance	1,204,710	1,433	6	10	8	10

- ### Top 10 4-digit NAICS subgroups for Lost Time OTHs
1. 3315-Foundries
 2. 3321-Forging and Stamping
 3. 4841-General Freight Trucking
 4. 4235-Metal and Mineral (except Petroleum) Merchant Wholesalers
 5. 5613-Employment Services
 6. 2131-Support Activities for Mining
 7. 3323-Architectural and Structural Metals Manufacturing
 8. 4842-Specialized Freight Trucking
 9. 4239-Miscellaneous Durable Goods Merchant Wholesalers
 10. 3219-Other Wood Product Manufacturing
- 



Top 10 4-digit NAICS subgroups for Lost Time OTHs

- | | |
|---|---|
| 1. 3315-Foundries | 7. 3323-Architectural and Structural Metals Manufacturing |
| 2. 3321-Forging and Stamping | 8. 4842-Specialized Freight Trucking |
| 3. 4841-General Freight Trucking | 9. 4239-Miscellaneous Durable Goods Merchant Wholesalers |
| 4. 4235-Metal and Mineral (except Petroleum) Merchant Wholesalers | 10. 3219-Other Wood Product Manufacturing |
| 5. 5613-Employment Services | |
| 6. 2131-Support Activities for Mining | |



SUMMARY DATA BY CAUSATION



Percent Change in Lost-time Claim Rates by Causation for BWC-Insured Single Location Private Employers Across NIOSH Industry Sectors — 2001–2010

NIOSH NORA Sector	ERGO	STF	OTH
All NORA Sectors	-10.5	-6.2	-8.0
Agriculture, Forestry and Fishing	-11.1	-9.0	-6.2
Construction	-12.4	-7.9	-9.1
Health Care and Social Assistance	-9.2	-3.9	-6.1
Mining (Except Oil and Gas Extraction)	-8.9	-7.1	-2.1
Manufacturing	-11.7	-7.6	-8.5
Oil and Gas Extraction	-8.9	-5.8	0.3
Public Safety	-5.7	-1.1	-4.0
Services (except Public Safety)	-10.0	-5.9	-7.3
Transportation, Warehousing, Utilities	-7.9	-3.9	-5.8
Wholesale/ Retail Trade	-10.0	-6.2	-7.1



Prevention Index Rank Summary by Causation for Lost Time Claims Across NIOSH NORA Sectors 2006–2010

NIOSH Sector Description	ERGO	STF	OTH	Average Rank
Transportation, Warehousing & Utilities	3	2	2	2.3
Manufacturing	1	6	1	2.7
Construction	5.5	1	3	3.2
Services (except Public Safety)	5.5	3.5	6	5.0
Healthcare & Social Assistance	3	3.5	10	5.5
Public Safety	3	6	8.5	5.8
Mining	7.5	6	4.5	6.0
Wholesale & Retail Trade	7.5	8	7	7.5
Oil & Gas	9	9	4.5	7.5
Agriculture, Forestry & Fishing	10	10	8.5	9.5



Highest priority 4-digit NAICS subgroups — PI rank by cause for Lost-time claims

NIOSH Sector Description	PI Rank		
	ERGO	STF	OTH
4841-General Freight Trucking	9	1	3
4842-Specialized Freight Trucking	10	2	8
3315-Foundries	4	43	1
6231-Nursing Care Facilities	1	4	74
4248-Beer, Wine, and Distilled Alcoholic Beverage Merchant Wholesalers	8	5	79



Limitations for surveillance data

- We have OHBWC data through 2010 ready now and 2011 is in house but not ready to be analyzed
- Results presented today are for the smallest OHBWC insured employers – single location, private
- Limited to three causation categories in this analysis



Discussion

- Although WC rates have decreased overall, risk varies by industry and causation
- Rate data for 2011 will be available soon
- Target more in depth analyses and interventions for industry subsectors with a high PI
- More detailed analyses are underway for
 - Ambulance Services claims data
 - Temporary Agency claims data



Thank you

Alysha R. Meyers
armeyers@cdc.gov



To request a copy of the NIOSH SAS-based auto-coding program please contact cwcs@cdc.gov

