

The Role of National Non-Profits in Public Health Emergency Response

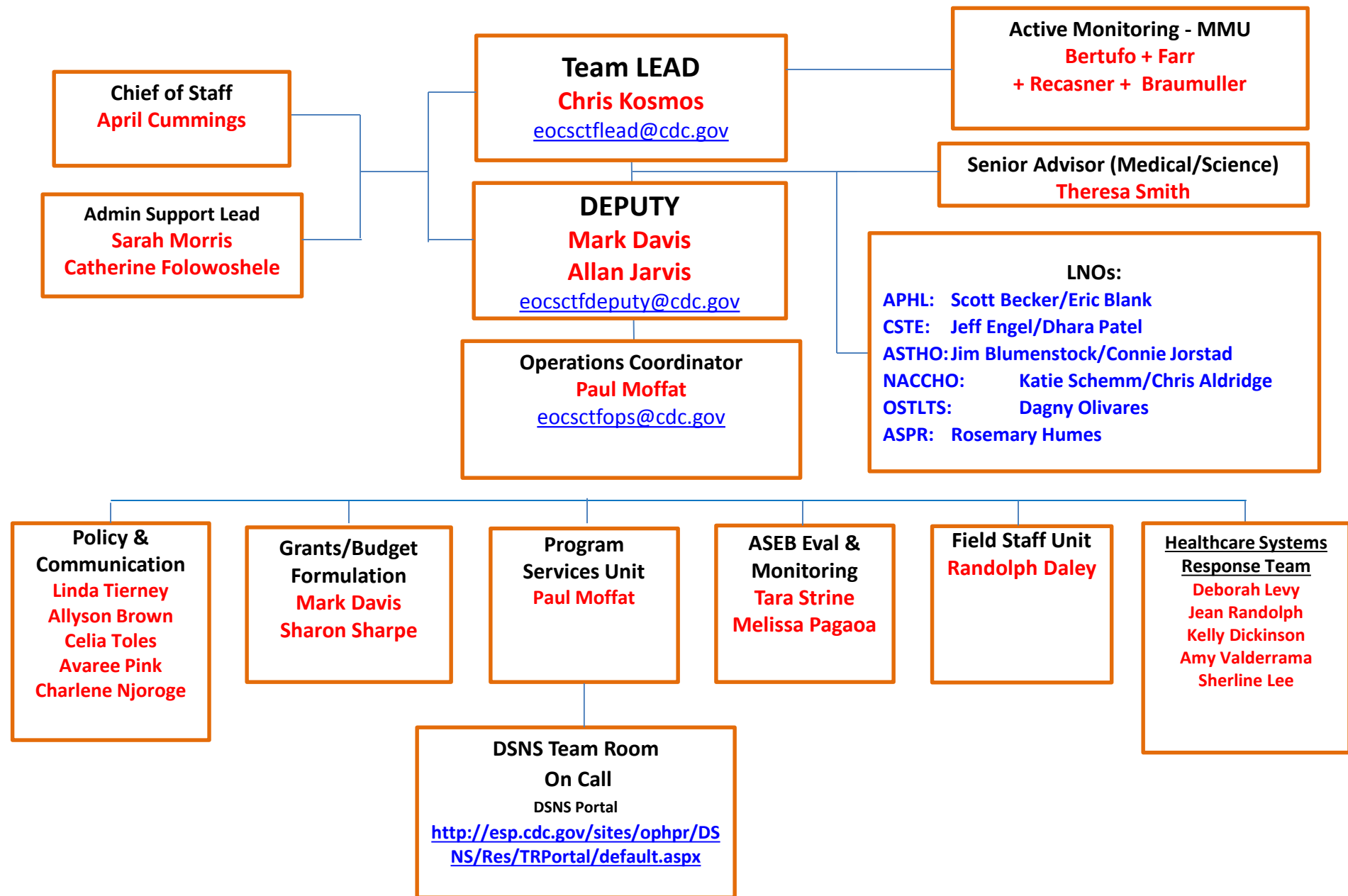
- National Incident Management
- Workforce: Domestic Epidemiology Capacity
- Workforce: Global Health Security, West Africa Containment Strategy (Unaffected Countries Team) and Guinea



Council of State and Territorial Epidemiologists

- CSTE funded in 2014 for preparedness and response activities in Year 2 of the current CDC Cooperative Agreement by OPHPR/DSLRL
- Part of the State and Local Coordination Task Force within the EOC
 - Spring 2014: MERS-CoV
 - 2014-15: Ebola
- CSTE has longstanding projects in Disaster Epidemiology funded by NCEH/DEHHE

STATE COORD TEAM EBOLA ORG CHART-5/14/15





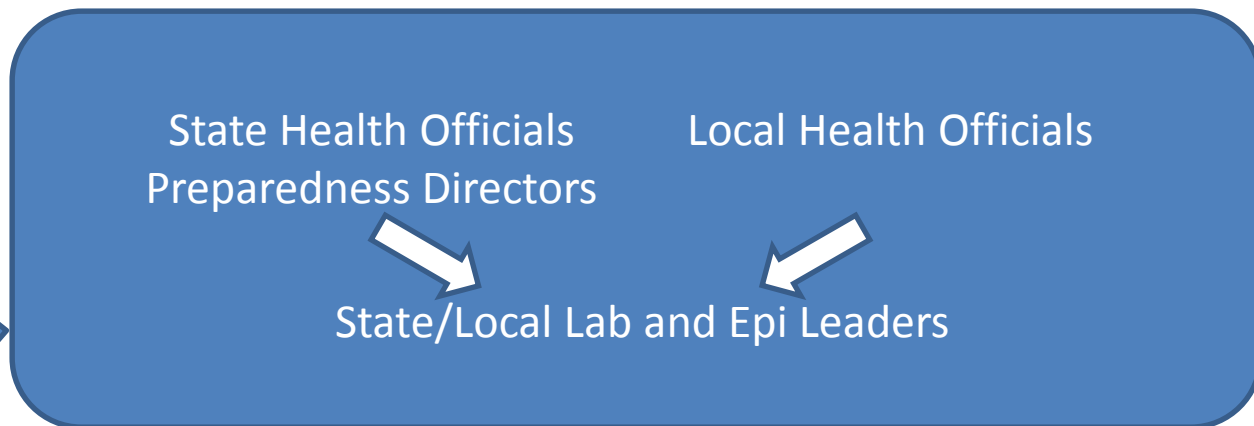
EpiX



2009
H1N1



2014
MERS



- International: Francophone Epis
 - Containment strategy: Mali, Benin, Niger, Senegal
 - Guinea
- Domestic
 - DHQP/DGMQ/ID Applied Epi Fellow deployments to CDC EOC
 - AEFs assisting host sites with AM/DAM, Ebola call lines, hospital preparedness

Albeit late, the WHO (World Health Organization) is spot-on in recognizing the urgent need [to engage an additional 900 epidemiologists \(triple the current contingent\)](#), in order to effectively combat the Ebola virus disease (EVD) epidemic still raging in West Africa. This is long overdue, if the goal is to end this epidemic.

Rossi A. Hassad PhD, MPH

<http://www.medpagetoday.com/InfectiousDisease/Ebola/49420>

Jan. 7, 2015

CSTE National Office

2872 Woodcock Boulevard, Suite 250

Atlanta, Georgia 30341

T 770.458.3811

F 770.458.8516

cmccoull@cste.org

Benin: Unaffected, High-Risk Country for Ebola



WHO Ebola Response Framework

Rapid Response Team (CDC)

Public Awareness and Community Engagement

Infection Prevention and Control

Case management / isolation / safe burial

- **Epidemiology / Surveillance (CDC)**
- **Contact Tracing (CDC)**
- **Laboratory capacity (CDC)**
- **Travel / Point of entry**

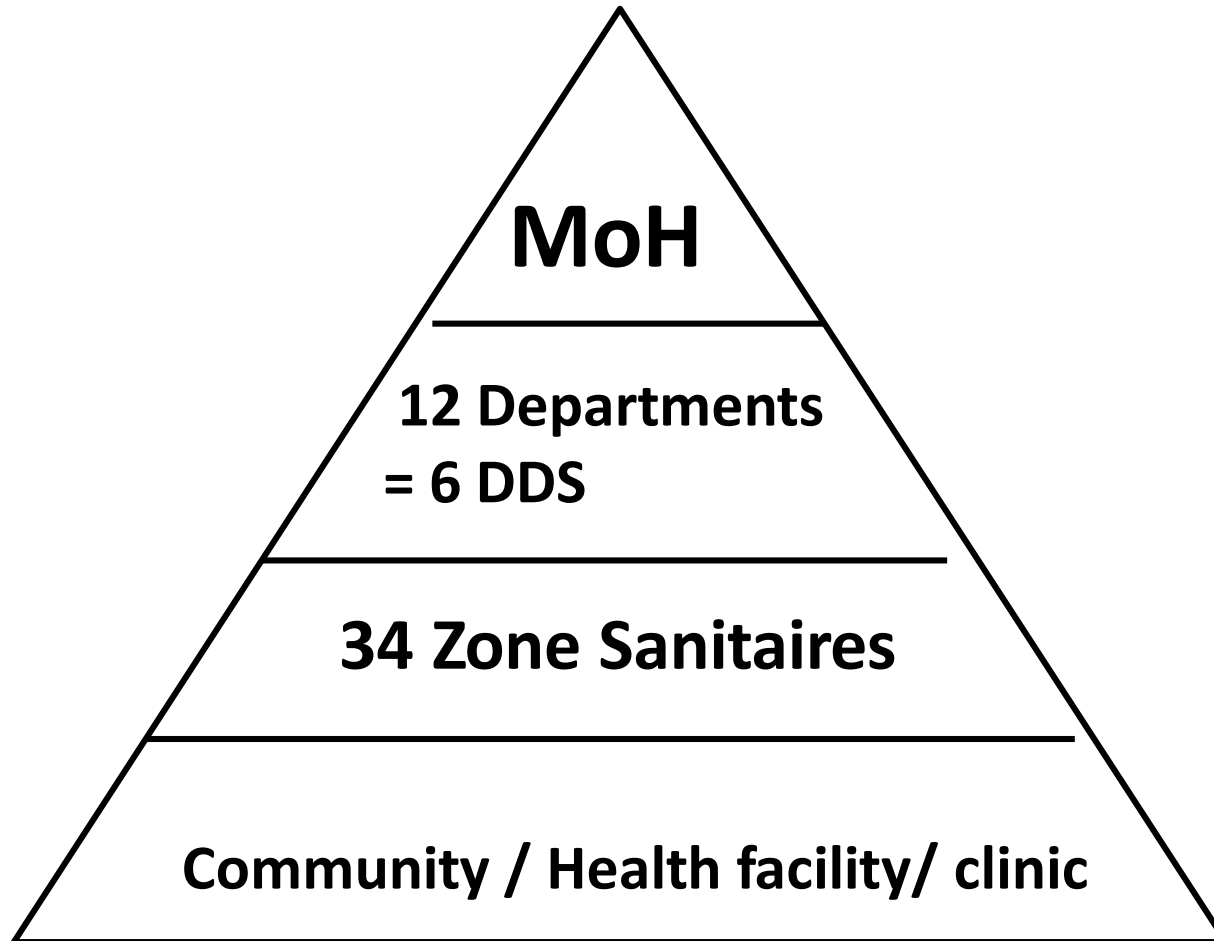


Goals of our Site Visits

- Interview key informants:
 - strengths and weaknesses in disease detection / reporting systems
- Focus on training needs:
 - Rapid Response Teams
 - Lab capacity
 - Epi and surveillance



Benin's Public Health Structure



Findings

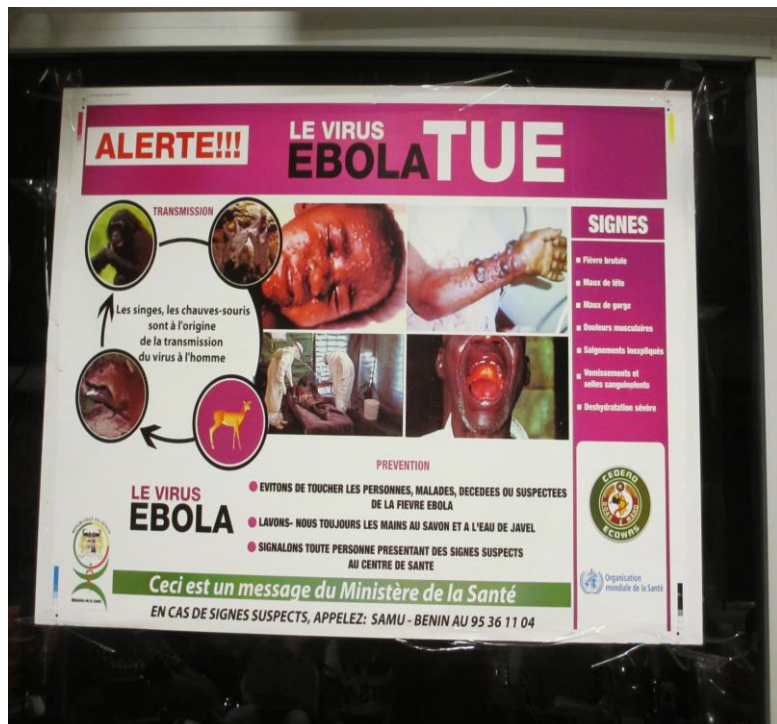
- Rapid Response Teams
 - Case definition; isolation; PPE; specimen
- Laboratory Testing
 - Limited capability: specimen collection; handling; packaging; shipping
- Epidemiology/Surveillance
 - Reporting of cases; data quality; analysis; reporting to MoH



Challenges

Lack of coordination among many international partners working on Ebola preparedness in Benin.

No CDC long-term vision for Benin



Change part-way through trip in CDC goal to establish training

No CDC Country office:

- logistics difficult

After trip: not clear who was responsible for followup on recommendations