



Suspicious Biological Outbreak?

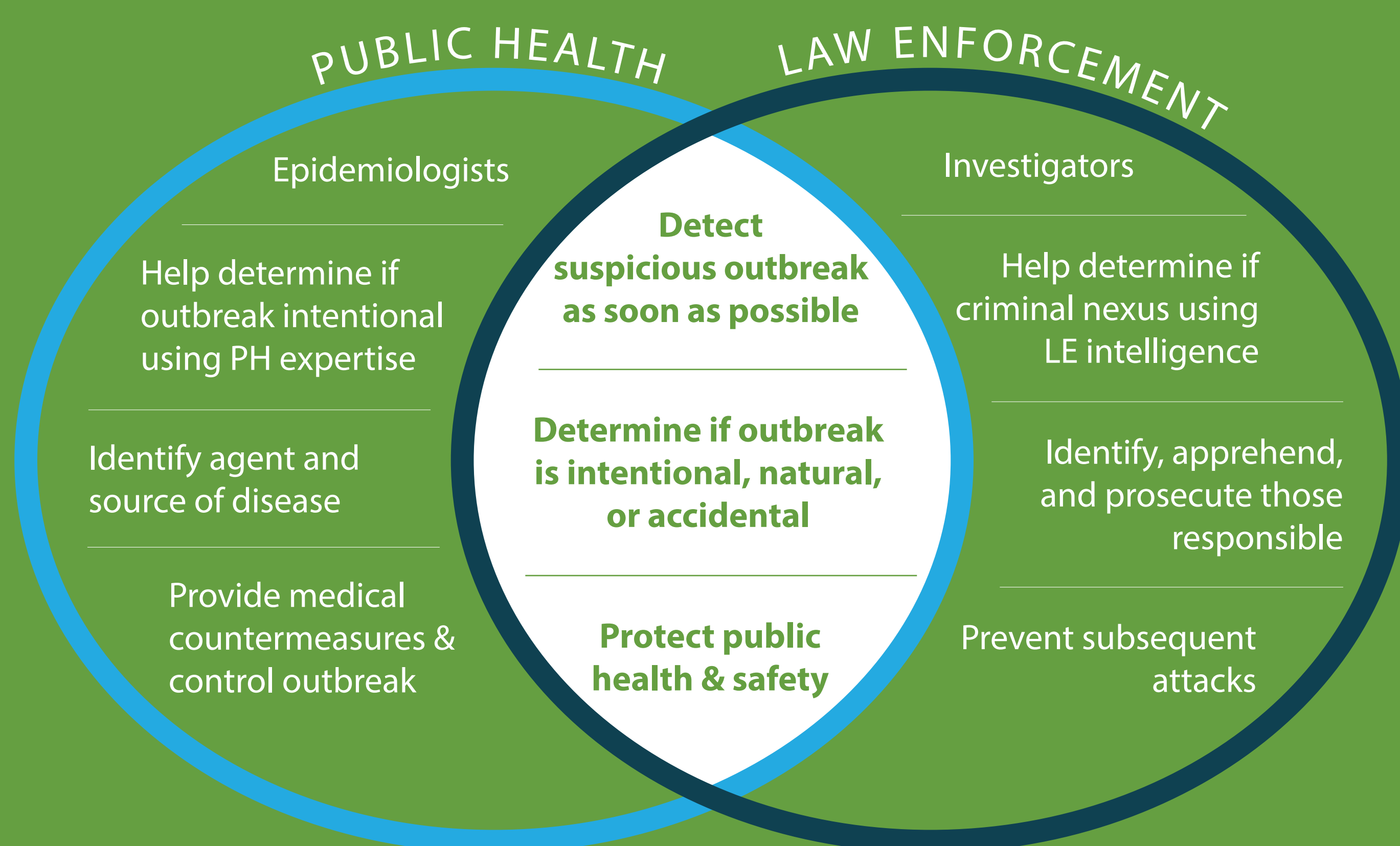
Why Conducting Joint Public Health (PH) and Law Enforcement (LE) Investigations are Effective and Efficient

The Problem

An intentional release of a pathogen may be difficult to discern from a natural outbreak. Lack of cooperation between PH and LE can impede mutual awareness, timely detection, and an efficient response.

The Solution

Joint criminal and epidemiological investigations allow PH and LE to utilize each other's strengths and resources and more effectively attain shared goals.



Joint public health and law enforcement investigations allow nations to be better prepared, detect threats earlier, and respond more rapidly and effectively to a suspicious biological outbreak.



Preparedness

- ▶ Pre-established PH and LE relationships help build mutual trust and credibility.
- ▶ Joint protocols determine in advance PH and LE roles and practices.
- ▶ Joint training and exercises identify what works and areas for improvement.

Detection

- ▶ Proactive sharing of relevant LE and PH information between disciplines will likely result in earlier detection of a bio attack.
 - ▶ PH has unique knowledge of who's getting sick where and when.
 - ▶ LE has unique knowledge of threats and nefarious actors.

Response

- ▶ A joint investigation utilizes information from both PH and LE.
 - ▶ PH can provide expertise about the disease and relevant medical information to help LE determine if the outbreak is intentional.
 - ▶ LE can provide relevant case information which could help PH identify the source of the outbreak.
- ▶ A joint LE and PH interview maximizes the opportunity to collect information and reduces patient stress by decreasing the number of interviews.