



# **A Stitch in Time: Improving Linkage and Retention in HIV Care**

**Lei Zhang, Arturo Mehretu,  
Jay Boyer, Sony Varghese,  
Marlo Tonge, Cassius Lockett**

**Southern Nevada Health District**

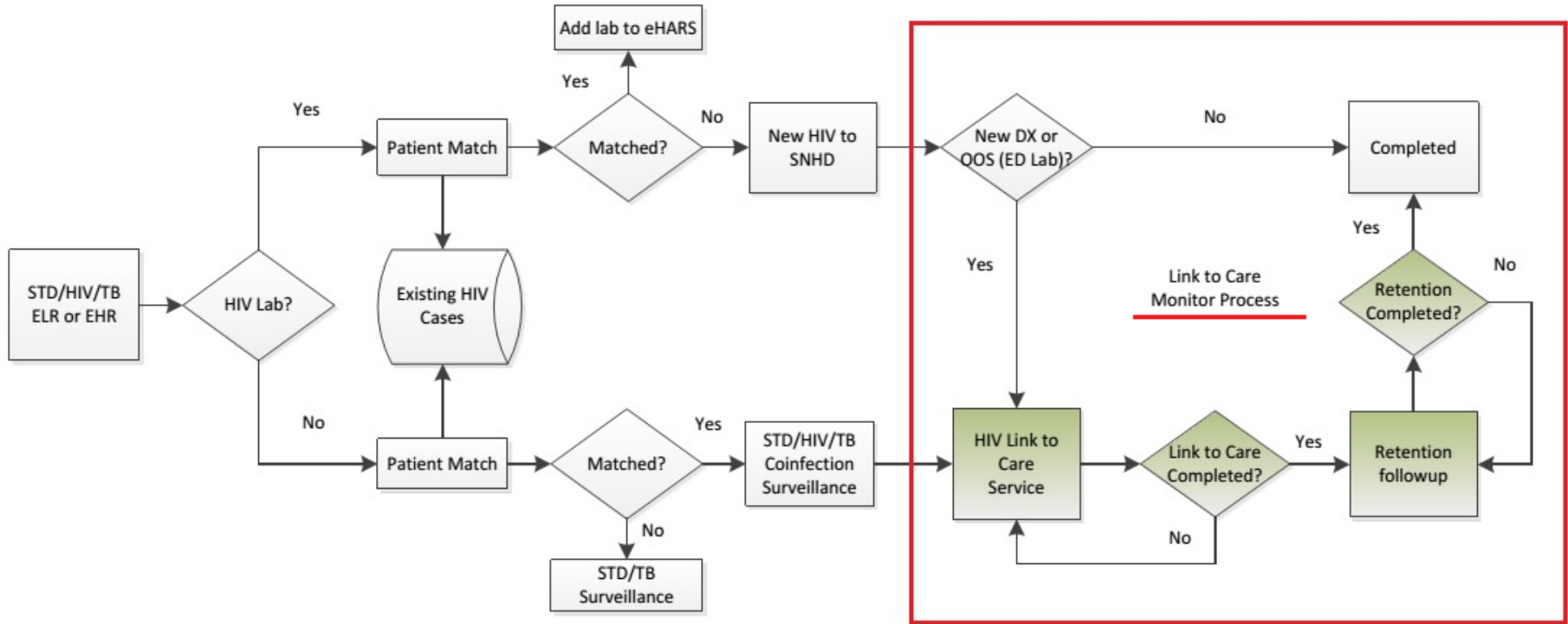
**2016 CSTE Annual Conference  
Anchorage, AK**



# Surveillance Infrastructure

- Mirth Connect
- EMSA (Electronic Message Staging Area)
- EpiTrax
- Pentaho

# HIV Link to Care Flow Chart





# Pentaho Report

**Start Date**  **End Date**

**Enrollment**  **Link to Care**  **First Appointment Achieved**  **Status**

**Output Type**

Auto-Submit

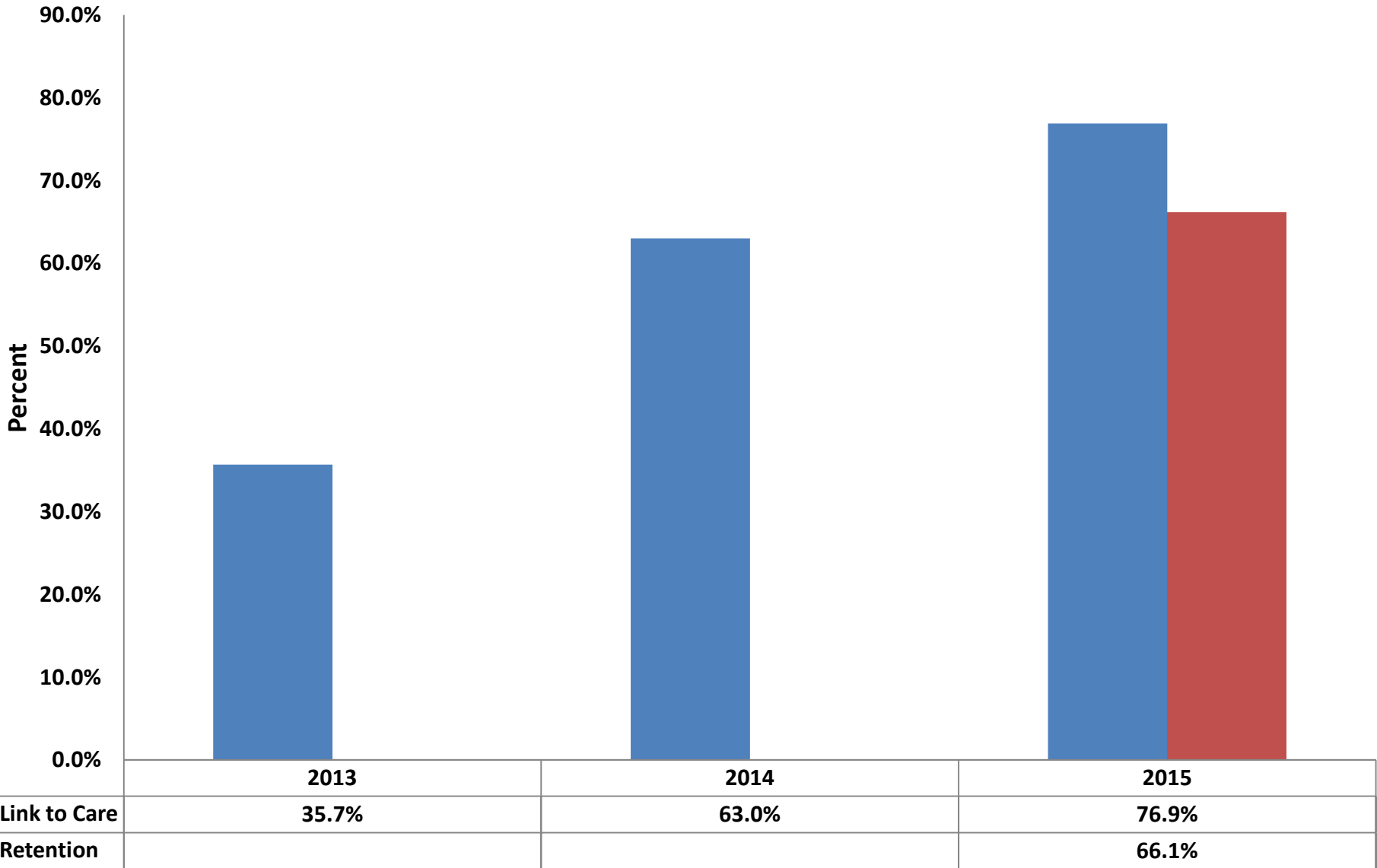


## HIV Link to Care Report

Event ID	Report Date	HIV Dispo	Link Care	Link Ref	First Appt DT	First Appt	Second Appt	Med Start	Retention	Days	Status
----------	-------------	-----------	-----------	----------	---------------	------------	-------------	-----------	-----------	------	--------



# HIV Link to Care and Retention Rate Clark County, NV (2013-2015)





# Summary

- STD Co-infection provides a new way to identify OOC HIV clients.
- Pentaho report improves the timeliness of identifying OOC clients and rates of link-to-care and retention in HIV care.

# Acknowledgement

- This project is supported by Nevada Division of Public and Behavioral Health Ryan White Part B program under grant number HD 15009-2.